



1400-1440  
MINNESOTA ST  
SAN FRANCISCO, CA

POTRERO HILL  
DOGPATCH SPACE  
FOR LEASE

10,831 - 43,475 ± SF

Scott Mason  
President  
scott@calcosf.com  
415.215.1937  
LIC #01036610

Lindsay Cutler  
Senior Associate  
Lindsay@calcosf.com  
714.322.9194  
LIC #02198286



 **CALCO**  
COMMERCIAL, INC.



1400-1440  
MINNESOTA ST  
SAN FRANCISCO, CA

# 1426

MINNESOTA ST  
SAN FRANCISCO, CA

- 12,400 ± SF total
  - ◊ 1,883 ± SF of mezzanine office
- Two (2) pony dock positions and one (1) ramped drive-in loading door
- Heavy Power (300 AMPs)\*
- Sprinklered
- Zoned: PDR-1-G
- Available now
- Inquire for rental Rate

\*Tenant to verify power







1400-1440  
MINNESOTA ST  
SAN FRANCISCO, CA

1440  
MINNESOTA ST  
SAN FRANCISCO, CA

- 10,831 ± SF total
  - ◊ 856 ± SF of mezzanine space
- Three (3) pony docks
- One (1) dock door
- Heavy Power (300 AMPs)\*
- Sprinklered
- Zoned: PDR-1-G
- Available now
- Inquire for rental Rate

\*Tenant to verify power.





1400-1440  
MINNESOTA ST  
SAN FRANCISCO, CA

1400  
MINNESOTA ST  
SAN FRANCISCO, CA

- 20,244± SF total
  - ◊ 4,845 ± SF of office (including mezzanine 2,280 SF)
- One (1) recessed dock
- One (1) ramped drive-in loading door
- Heavy Power (estimated at 800 AMPs)\*
- Sprinklered
- Zoned: PDR-1-G
- Available now
- Inquire for rental Rate

\*Tenant to verify power



# 1400-1440 MINNESOTA STREET



1426 Minnesota St



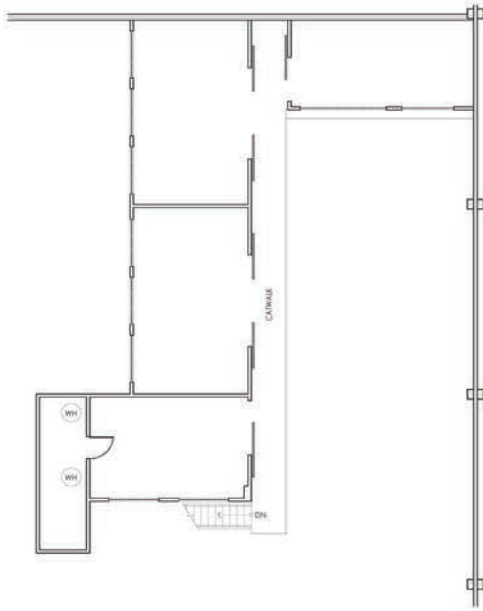
1440 Minnesota St



1400 Minnesota St

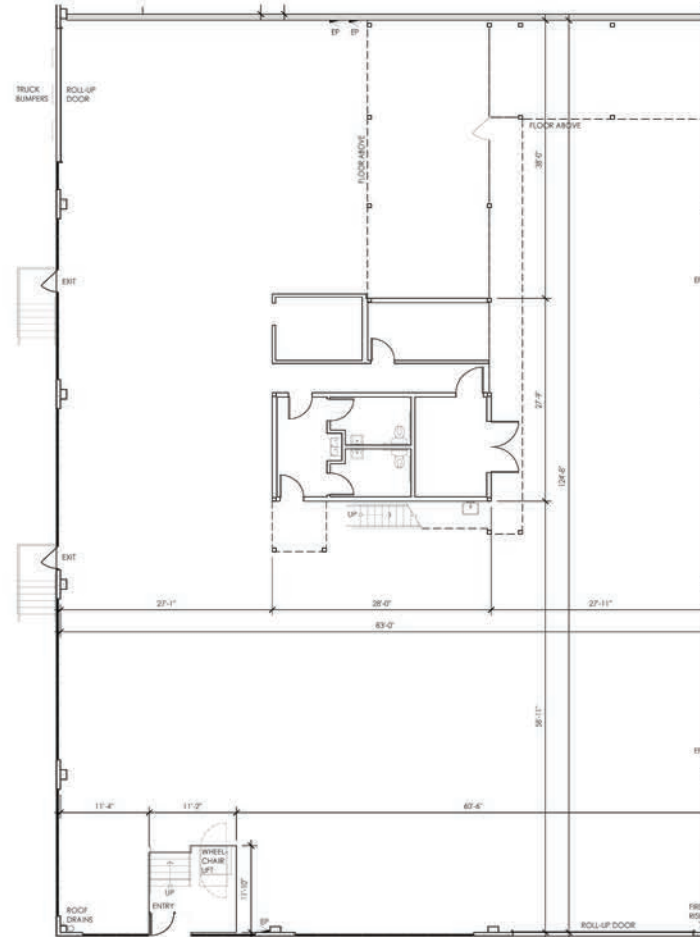
All three units can be delivered together for a total approximate square footage of 43,475, or units can be leased in any configuration.

# 1426 MINNESOTA ST SAN FRANCISCO, CA FLOORPLAN



MEZZANINE OFFICE (1,883 SF)

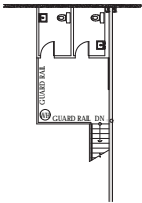
SCALE: 1/8" = 1'-0"



GROUND FLOOR (WAREHOUSE 9,733 SF & OFFICE 784 SF)

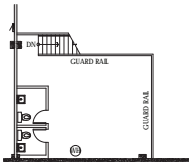
SCALE: 1/8" = 1'-0"

# 1440 MINNESOTA ST SAN FRANCISCO, CA FLOORPLAN



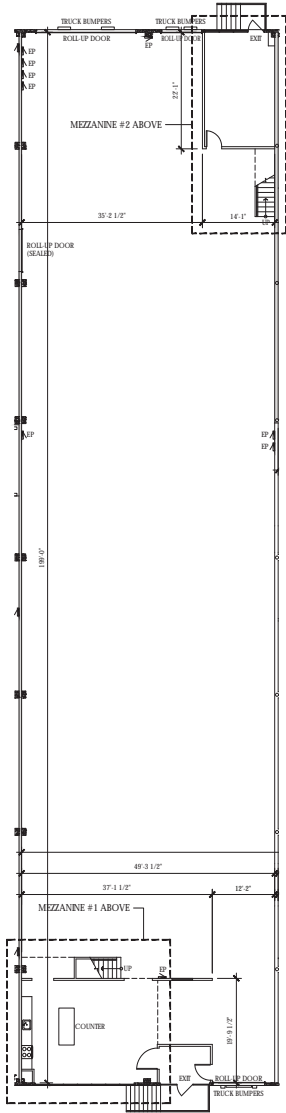
MEZZANINE #2 (318 SF)

SCALE: 3/32" = 1'-0"



MEZZANINE #1 (538 SF)

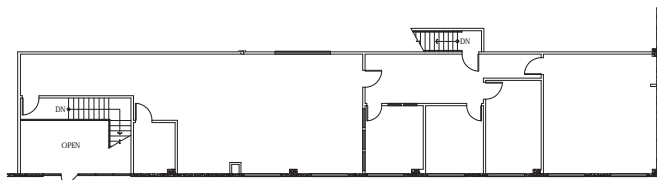
SCALE: 3/32" = 1'-0"



GROUND FLOOR (WAREHOUSE 9,975 SF)

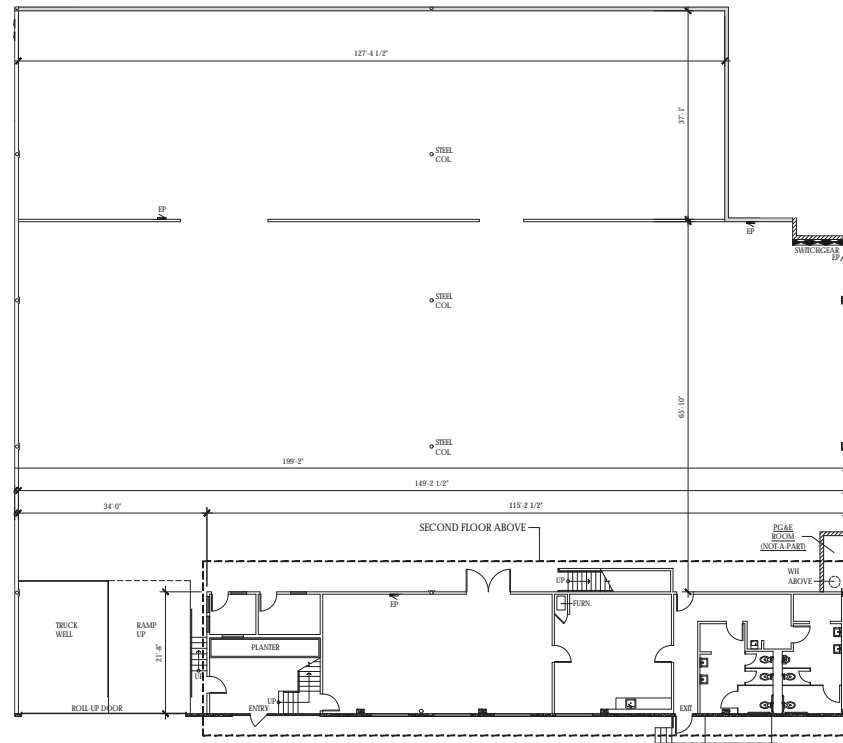
SCALE: 3/32" = 1'-0"

# 1400 MINNESOTA ST SAN FRANCISCO, CA FLOORPLAN



SECOND FLOOR (2,280 SF)

SCALE: 3/32" = 1'-0"



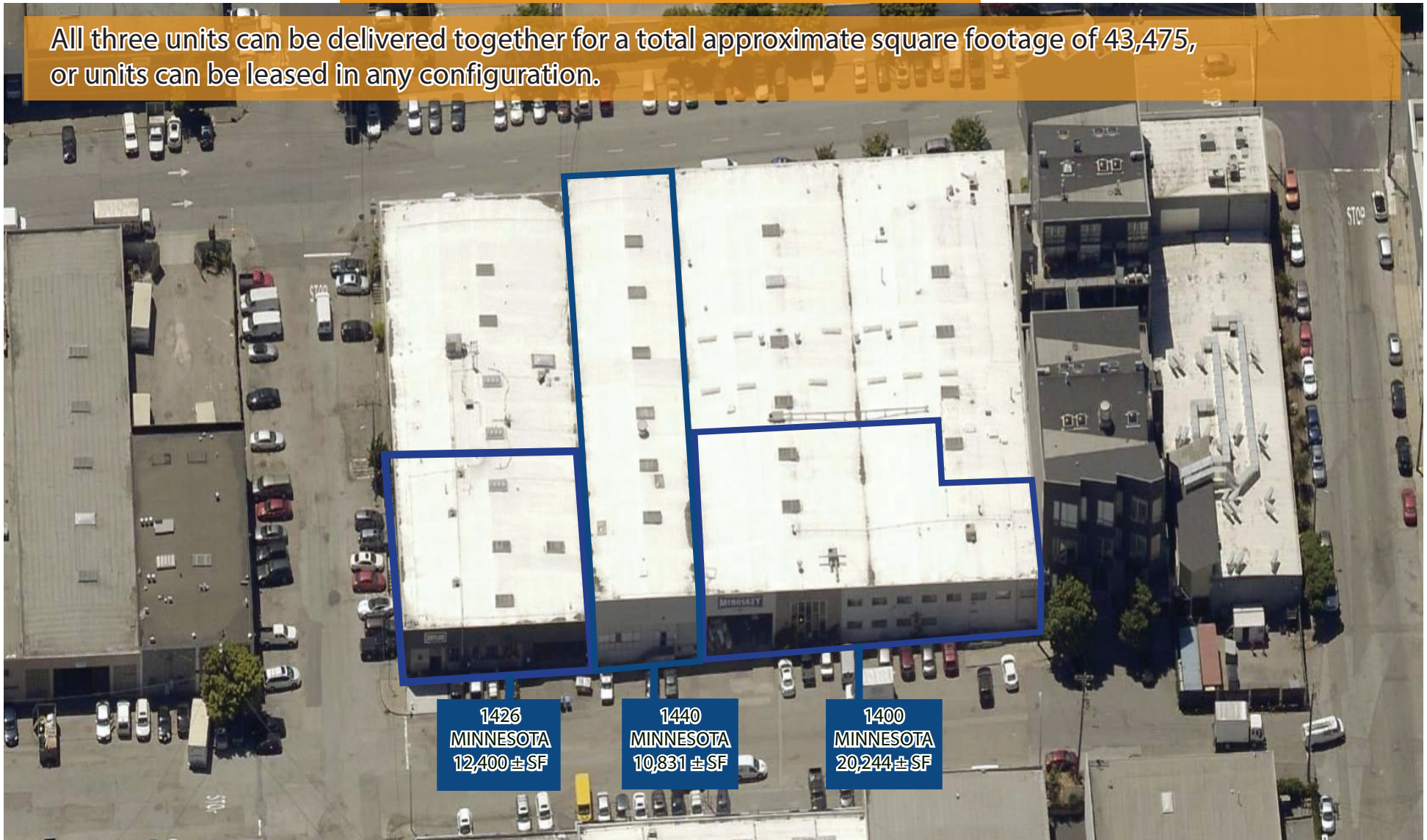
GROUND FLOOR (WAREHOUSE 15,399 SF & OFFICE 2,565 SF)

SCALE: 3/32" = 1'-0"



# 1400-1440 MINNESOTA ST AERIAL

All three units can be delivered together for a total approximate square footage of 43,475,  
or units can be leased in any configuration.



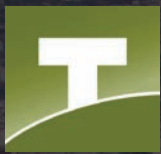
Scott Mason  
President  
scott@calcosf.com  
415.215.1937  
LIC #01036610



**CALCO**  
COMMERCIAL, INC.

Lindsay Cutler  
Senior Associate  
Lindsay@calcosf.com  
714.322.9194  
LIC #02198286





**CALCO**  
COMMERCIAL, INC.

Subject  
Property

## Close Proximity

I - 280	0.5 Miles
I - 101	1.0 Mile
24th St BART	2.0 Miles
16th St BART	2.9 Miles
Bay Bridge	2.9 Miles
Downtown SF	3.0 Miles
SFO	10 Miles

Scott Mason  
President  
415.215.1937 (c)  
scott@calcosf.com  
DRE# 01036610

Lindsay Cutler  
Senior Associate  
714.322.9194 (c)  
lindsay@calcosf.com  
DRE# 2198286