

1475 Indiana St & 1400-1440 Minnesota St  
San Francisco, CA

Potrero Hill / Dogpatch Space For Lease



**CALCO**  
COMMERCIAL, INC.



**Scott Mason**  
President  
415.215.1937 (c)  
scott@calcosf.com  
DRE# 01036610

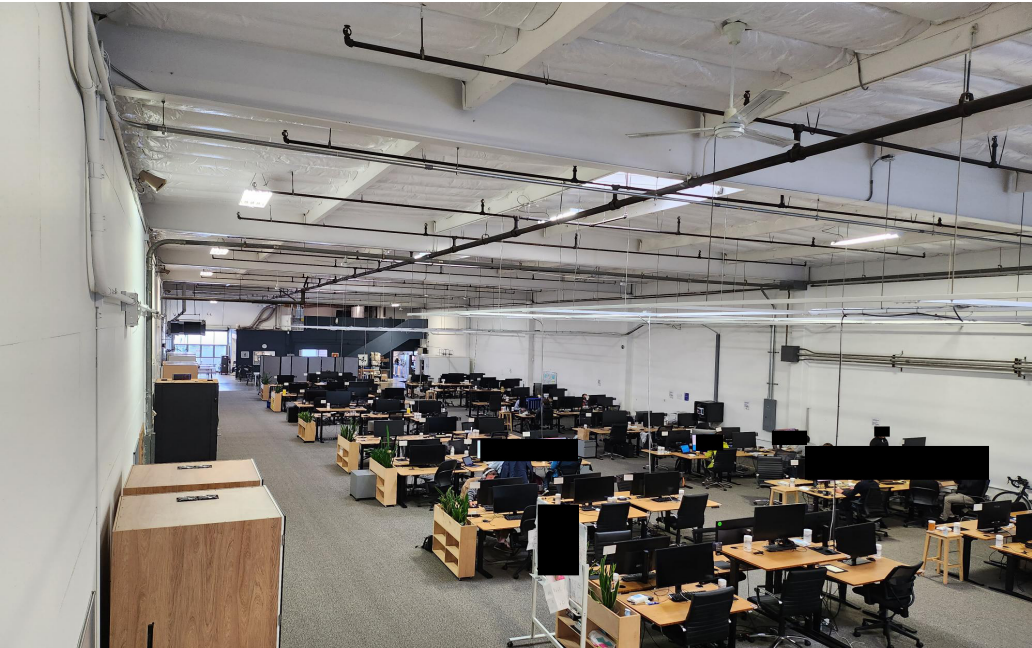
**Lindsay Cutler**  
Senior Associate  
714.322.9194 (c)  
lindsay@calcosf.com  
DRE# 2198286

1475 Indiana St & 1400-1440 Minnesota St  
San Francisco, CA

Potrero Hill / Dogpatch Space For Lease



**CALCO**  
COMMERCIAL, INC.



1475 Indiana St & 1400-1440 Minnesota St  
San Francisco, CA

Potrero Hill / Dogpatch Space For Lease



**CALCO**  
COMMERCIAL, INC.

## PROPERTY DETAILS

- 31,075± sf
  - Office: 5,701 ± SF (including mezzanine)
- Heavy power estimated at 1,200 Amps \*
- One (1) dock high loading door
- One (1) recessed dock high loading door
- One (1) ramped drive-in loading door
- Three (3) pony dock positions
- Sprinklered
- Zoning - PDR-1-G
- Available now
- Inquire for Rental Rate

\*Tenant to verify power

**Scott Mason**  
President  
415.215.1937 (c)  
scott@calcosf.com  
DRE# 01036610

**Lindsay Cutler**  
Senior Associate  
714.322.9194 (c)  
lindsay@calcosf.com  
DRE# 2198286

1475 Indiana St & 1400-1440 Minnesota St  
San Francisco, CA

Potrero Hill / Dogpatch Space For Lease



**CALCO**  
COMMERCIAL, INC.



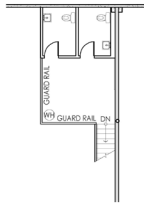
POSSIBLE  
ADDITION

SUBJECT  
PROPERTY

# FLOORPLAN

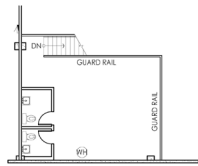


**CALCO**  
COMMERCIAL, INC.



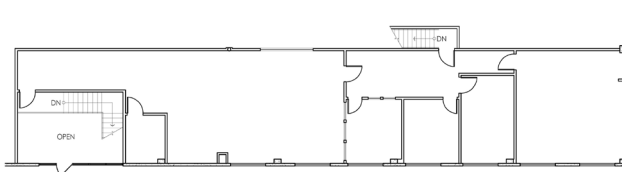
**MEZZANINE #2 (318 SF)**

SCALE: 3/32" = 1'-0"



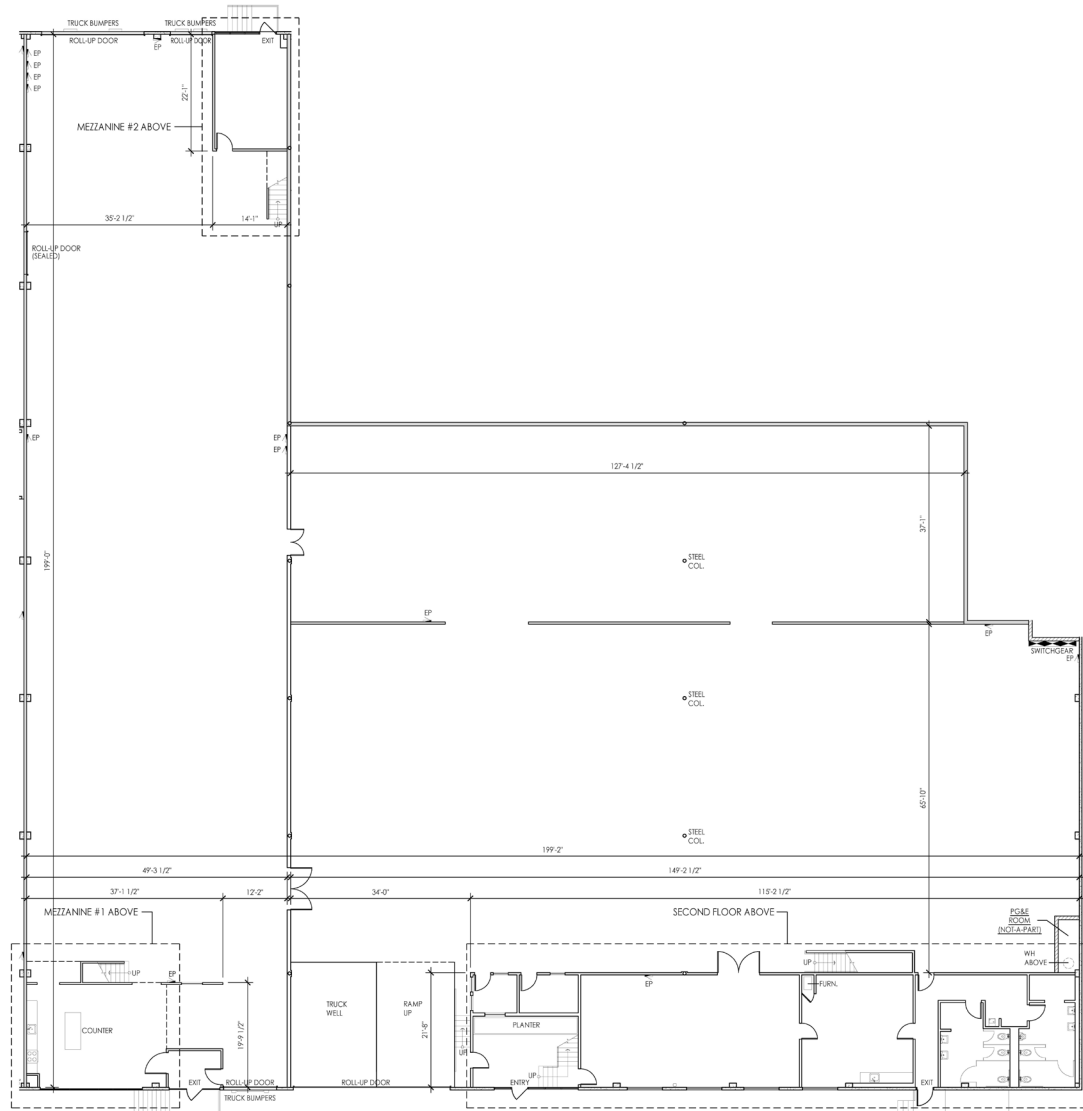
**MEZZANINE #1 (538 SF)**

SCALE: 3/32" = 1'-0"



**SECOND FLOOR (2,280 SF)**

SCALE: 3/32" = 1'-0"



**GROUND FLOOR (WAREHOUSE 25,374 SF & OFFICE 2,565 SF)**

SCALE: 3/32" = 1'-0"

TENANT GROSS AREA	
OFFICE (FINISHED)	4,845 SF
MEZZANINE #1 (UNFINISHED)	538 SF
MEZZANINE #2 (UNFINISHED)	318 SF
WAREHOUSE (UNFINISHED)	25,374 SF
<b>TOTAL</b>	<b>31,075 SF</b>



**CALCO**  
COMMERCIAL, INC.

Subject  
Property



## Close Proximity

I - 280	0.5 Miles
I - 101	1.0 Mile
24th St BART	2.0 Miles
16th St BART	2.9 Miles
Bay Bridge	2.9 Miles
Downtown SF	3.0 Miles
SFO	10 Miles

Scott Mason  
President  
415.215.1937 (c)  
scott@calcosf.com  
DRE# 01036610

Lindsay Cutler  
Senior Associate  
714.322.9194 (c)  
lindsay@calcosf.com  
DRE# 2198286