

1426 Minnesota St/ 1051 26th St  
San Francisco, CA  
Potrero Hill / Dogpatch Space For Lease



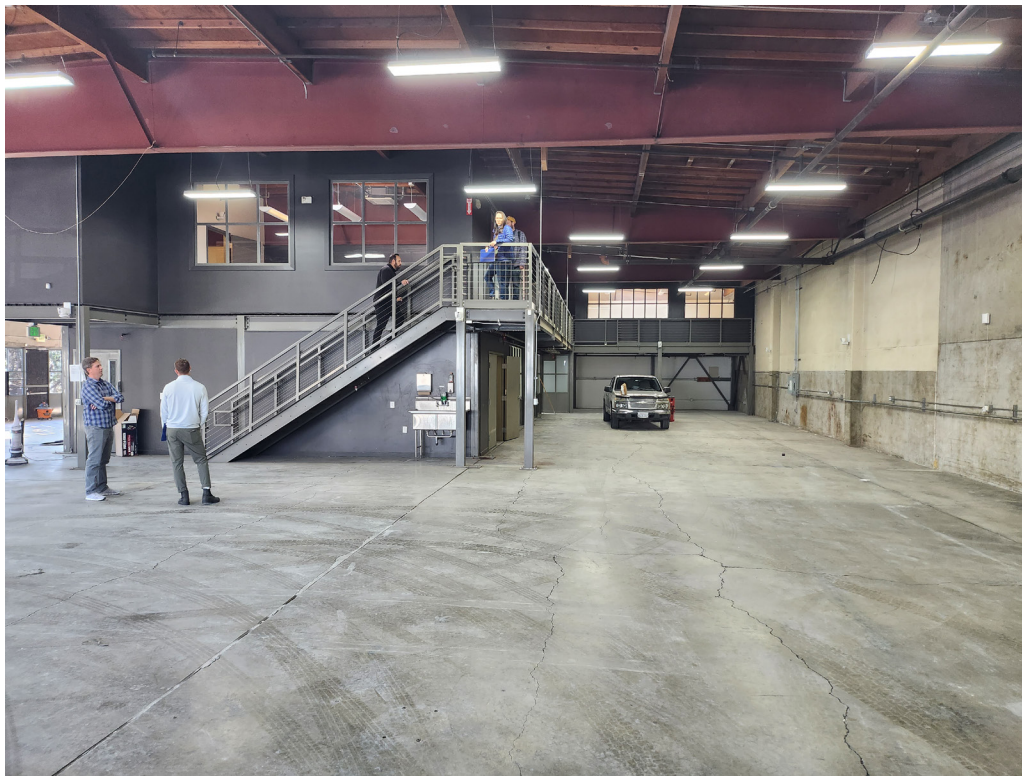
**CALCO**  
COMMERCIAL, INC.



**CALCO**  
COMMERCIAL, INC. [www.calco.com](http://www.calco.com)  
**FOR LEASE**  
±10-41K SF  
Scott Mason  
415.215.1937  
Lindsay Cutler  
714.322.9194  
415.970.0000

Scott Mason  
President  
415.215.1937 (c)  
scott@calcosf.com  
DRE# 01036610

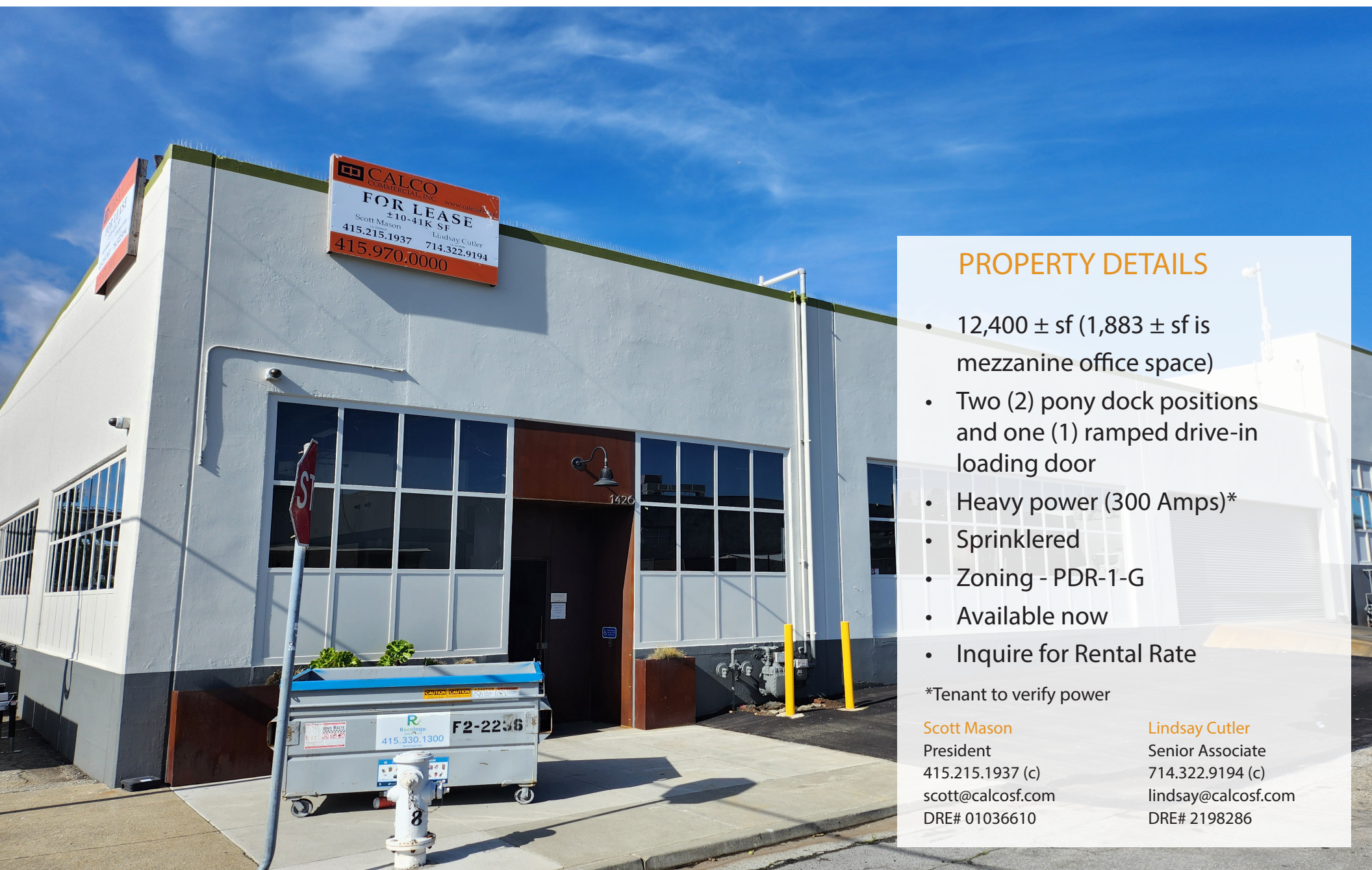
Lindsay Cutler  
Senior Associate  
714.322.9194 (c)  
lindsay@calcosf.com  
DRE# 2198286



1426 Minnesota St/ 1051 26th St  
San Francisco, CA  
Potrero Hill / Dogpatch Space For Lease



**CALCO**  
COMMERCIAL, INC.



**CALCO**  
COMMERCIAL, INC. www.calco.com  
**FOR LEASE**  
±10-41K SF  
Scott Mason Lindsay Cutler  
415.215.1937 714.322.9194  
415.970.0000

### PROPERTY DETAILS

- 12,400 ± sf (1,883 ± sf is mezzanine office space)
- Two (2) pony dock positions and one (1) ramped drive-in loading door
- Heavy power (300 Amps)\*
- Sprinklered
- Zoning - PDR-1-G
- Available now
- Inquire for Rental Rate

\*Tenant to verify power

**Scott Mason**  
President  
415.215.1937 (c)  
scott@calcosf.com  
DRE# 01036610

**Lindsay Cutler**  
Senior Associate  
714.322.9194 (c)  
lindsay@calcosf.com  
DRE# 2198286

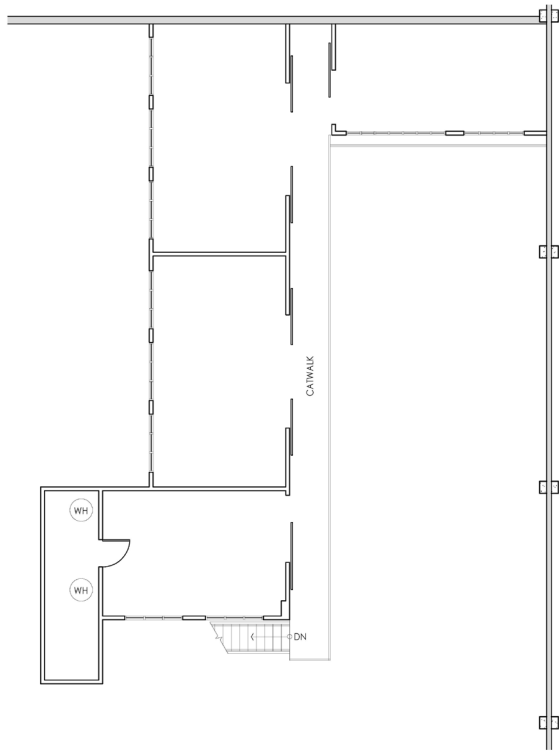
1426 Minnesota St/ 1051 26th St  
San Francisco, CA  
Potrero Hill / Dogpatch Space For Lease



 **CALCO**  
COMMERCIAL, INC.

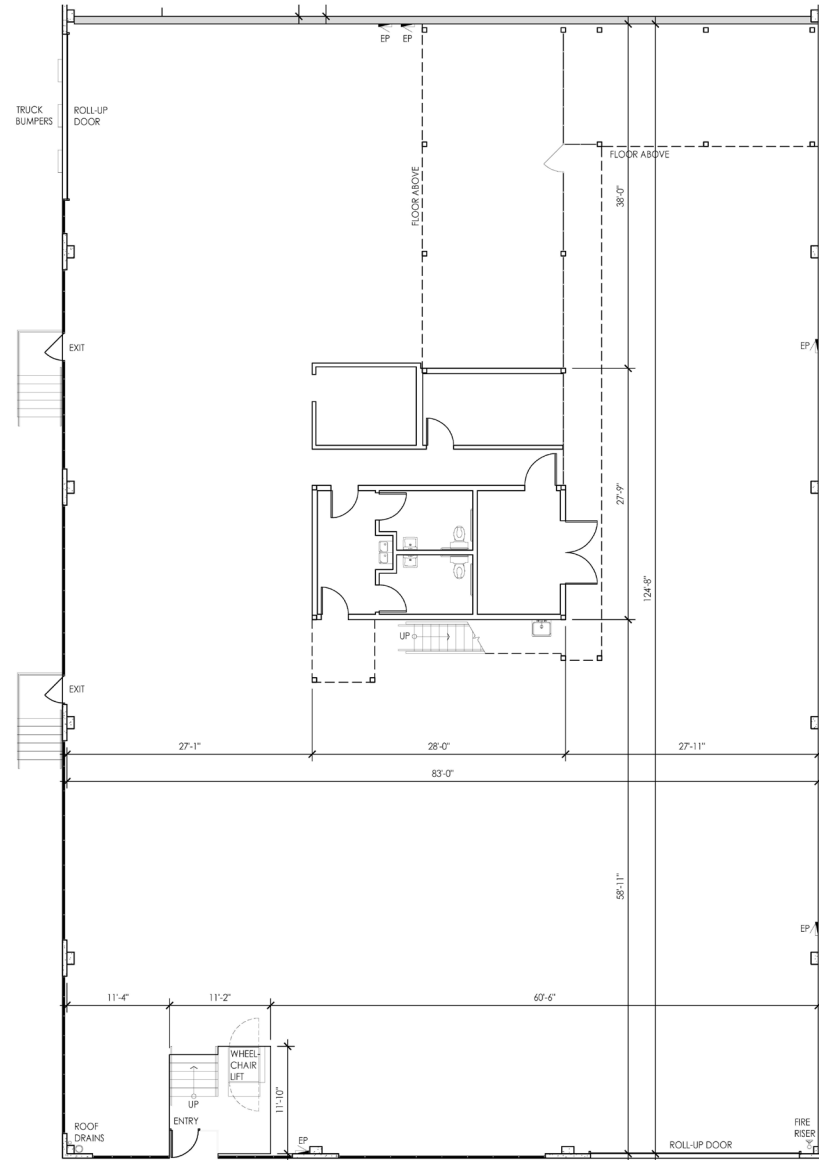


# FLOORPLAN



MEZZANINE OFFICE (1,883 SF)

SCALE: 1/8" = 1'-0"



GROUND FLOOR (WAREHOUSE 9,733 SF & OFFICE 784 SF)

SCALE: 1/8" = 1'-0"

- Total space 12,400 ± SF
  - Mezzanine: 1,883 ± SF
- Two (2) pony dock positions and one (1) grade level ramp
- Available now

TENANT GROSS AREA	
OFFICE (FINISHED)	2,667 SF
WAREHOUSE (UNFINISHED)	9,733 SF
TOTAL	12,400 SF



**CALCO**  
COMMERCIAL, INC.

Subject  
Property



## Close Proximity

I - 280	0.5 Miles
I - 101	1.0 Mile
24th St BART	2.0 Miles
16th St BART	2.9 Miles
Bay Bridge	2.9 Miles
Downtown SF	3.0 Miles
SFO	10 Miles

Scott Mason  
President  
415.215.1937 (c)  
scott@calcosf.com  
BRE# 01036610

Lindsay Cutler  
Senior Associate  
714.322.9194 (c)  
lindsay@calcosf.com  
DRE# 2198286