

265 & 168

EDDY ST TURK ST

SAN FRANCISCO, CA

 **CALCO**
COMMERCIAL, INC.



SIGNIFICANT POWER UPGRADE INITIATED

FOR SALE

Parking / Development Assemblage near new IKEA

265 & 168

EDDY ST TURK ST

Property Details

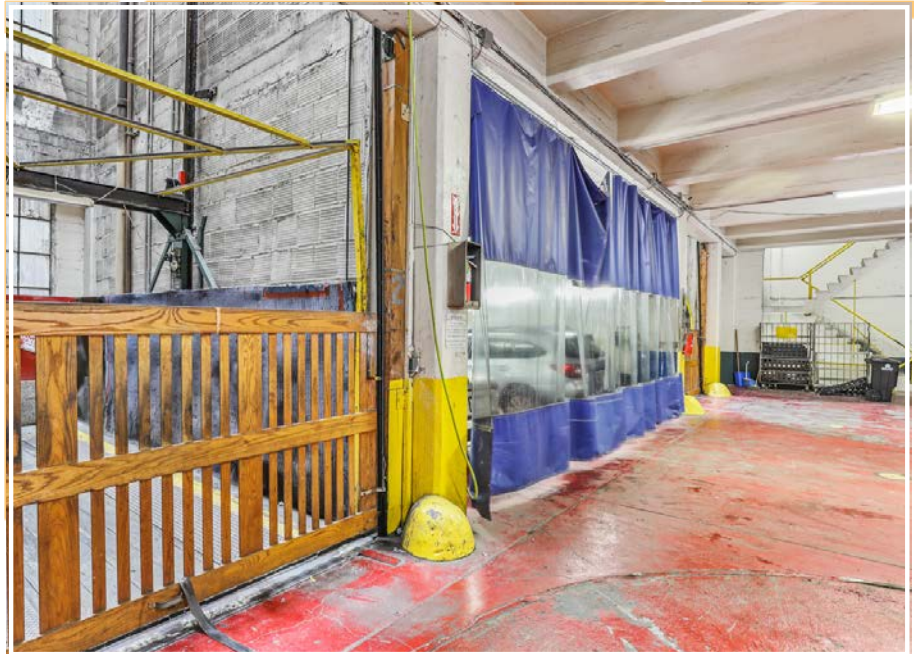
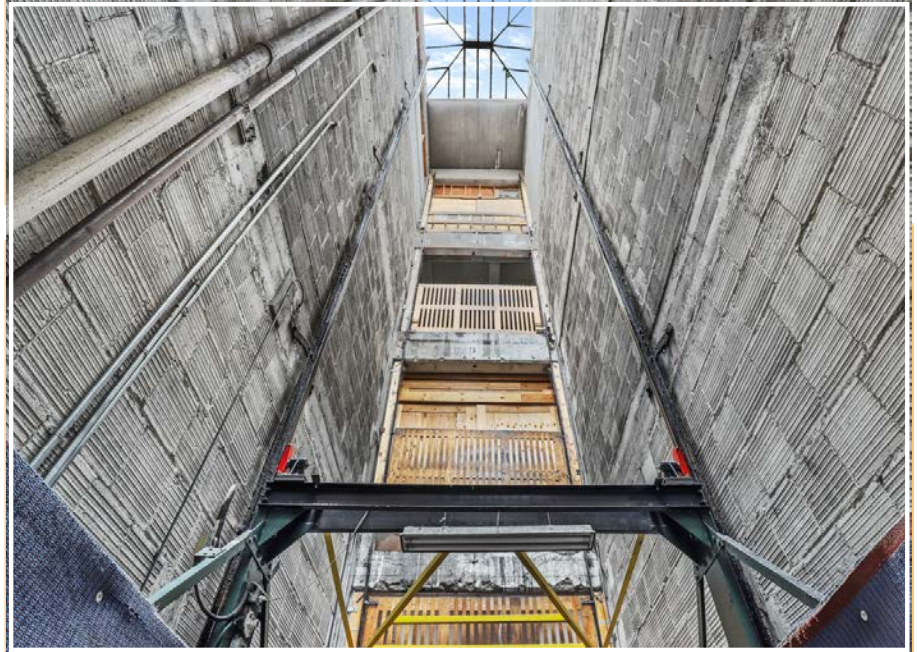
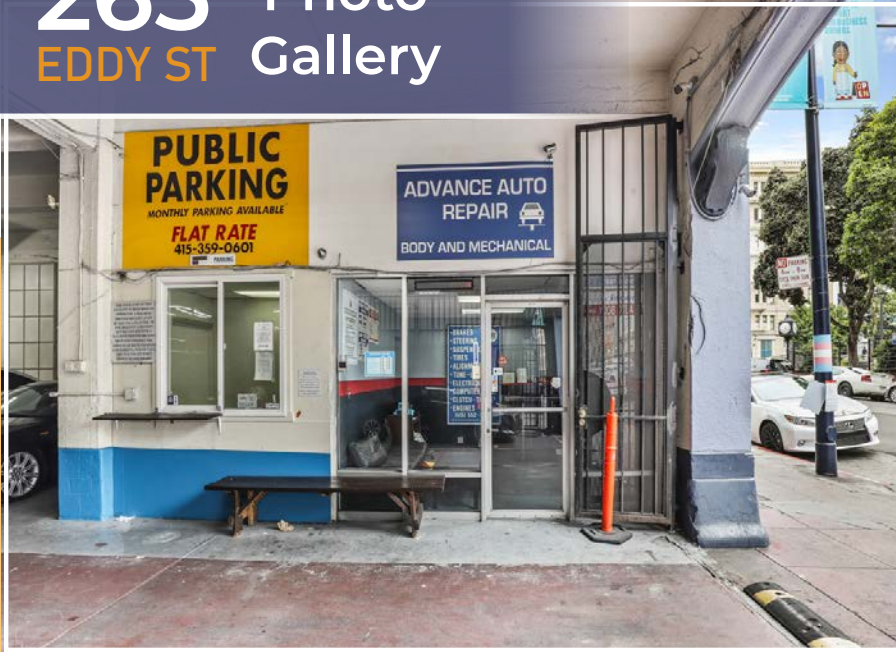
- 52,500 +/- SF concrete garage (265 Eddy St)
- 4,203 +/- SF parking lot (168 Turk St)
- 14,675 +/- SF total assemblage lot size
- Five garage levels including one basement
- No vehicle ramps between floors
- Space for 250+ vehicles
- 100% occupied with flexible lease terms
 - can be delivered vacant or occupied with steady cashflow
- Rare San Francisco building fully permitted for both auto repair and autobody repair
- Two (2) spray booths
- Two (2) vehicle elevators
- Major PG&E power upgrade accessible
- Zoned: RC-4
- Height Limit: 80'
- Vertical addition likely possible
- Transit-oriented development bonuses and affordable development bonuses likely possible
- Asking Price = \$15,900,000.00 (\$302.86/PSF)

Max Rattner
Vice President
415.364.8112 | max@calcosf.com
LIC# 02081586

Calco Commercial, Inc.
20 Dorman Ave
San Francisco, CA 94124
415.970.0000 | www.calcosf.com

265 Photo Gallery

EDDY ST



168 TURK ST

Max Rattner
Vice President
415.364.8112 | max@calcosf.com
LIC# 02081586



TAYLOR ST.

TURK ST.

JONES ST.

EDDY ST.

Max Rattner
Vice President
415.364.8112 | max@calcosf.com
LIC# 02081586

DEMOGRAPHICS

	1 Mile	2 Mile	5 Mile
2021 Population	145,255	357,801	771,850
Average HH Income	\$118,827	\$153,833	\$158,672

Max Rattner
Vice President
415.364.8112 | max@calcosf.com
LIC# 02081586

COURTYARD
BY MARRIOTT

STAYPINEAPPLE



Neiman Marcus

THE LUCKY FIG
KOREAN EATS

265
EDDY ST
&
168
TURK ST

Hilton

hotel nikko
san francisco

macy's

TRADER JOE'S

TENDERJOIN
MUSEUM

BART
ba

Westfield
SAN FRANCISCO CENTRE

RUUJI

THE WARFIELD

UNIVERSITY OF THE
PACIFIC

SF
Chronicle

Supreme

IHG HOTELS &
RESORTS



A.C.T.
AMERICAN
CONSERVATORY
THEATER

RUUJI
BART
ba

OPENING IN SPRING



San Francisco
Public Library

THE
Oupheum
THEATRE

WHOLE
FOODS
MARKET



CALCO
COMMERCIAL, INC.