

FOR LEASE

375 Alabama Street

3rd Floor Loft Office

±11,395 SF
Office Space

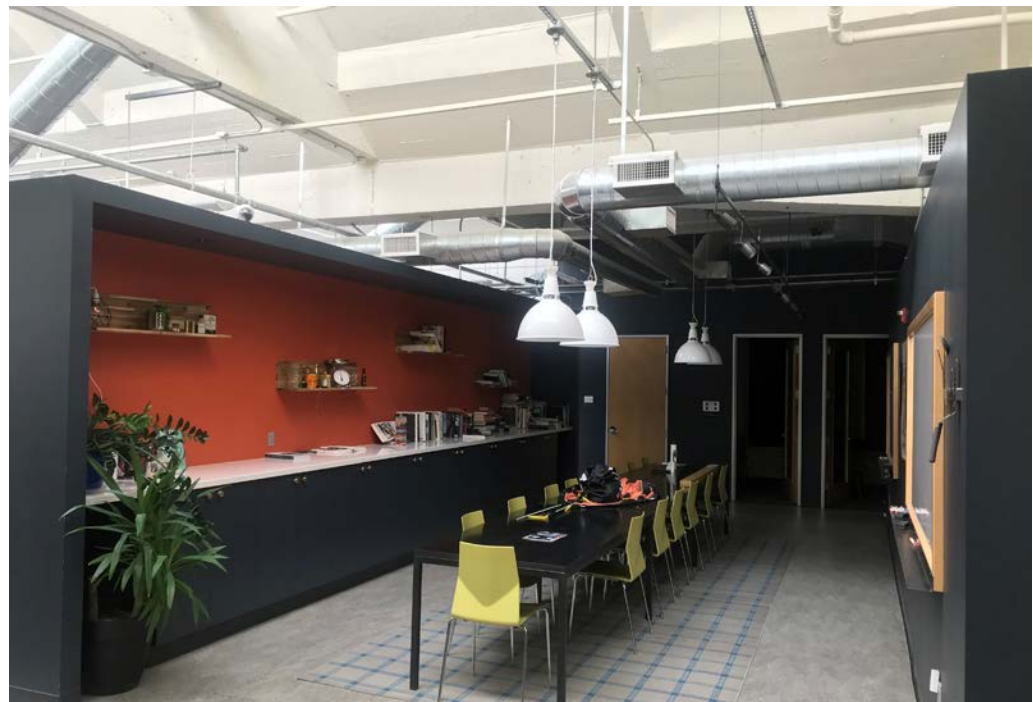
BEST PRICE IN THE MARKET

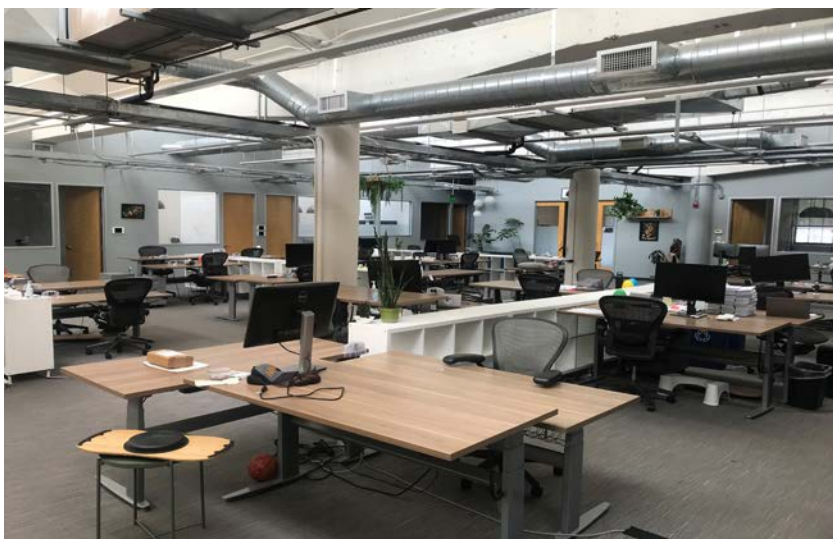


Scott Mason President
415.215.1937 | scott@calcosf.com
LIC# 01036610

Lindsay Cutler Senior Associate
714.322.9194 | lindsay@calcosf.com
LIC# 2198286

Calco Commercial, Inc.
415.970.0000
www.calcosf.com
20 Dorman Avenue
San Francisco, CA





Property Highlights:

- 11,395+/- sf of highly improved office (legally designated)
- Full HVAC, kitchen, conference rooms, private offices, open areas and roof deck
- High ceilings with superb natural light & saw-tooth roof
- Existing furniture can be made available
- Private on-site parking available
- Close to BART & Muni lines
- Available now
- \$2.00 psf/ month, IG

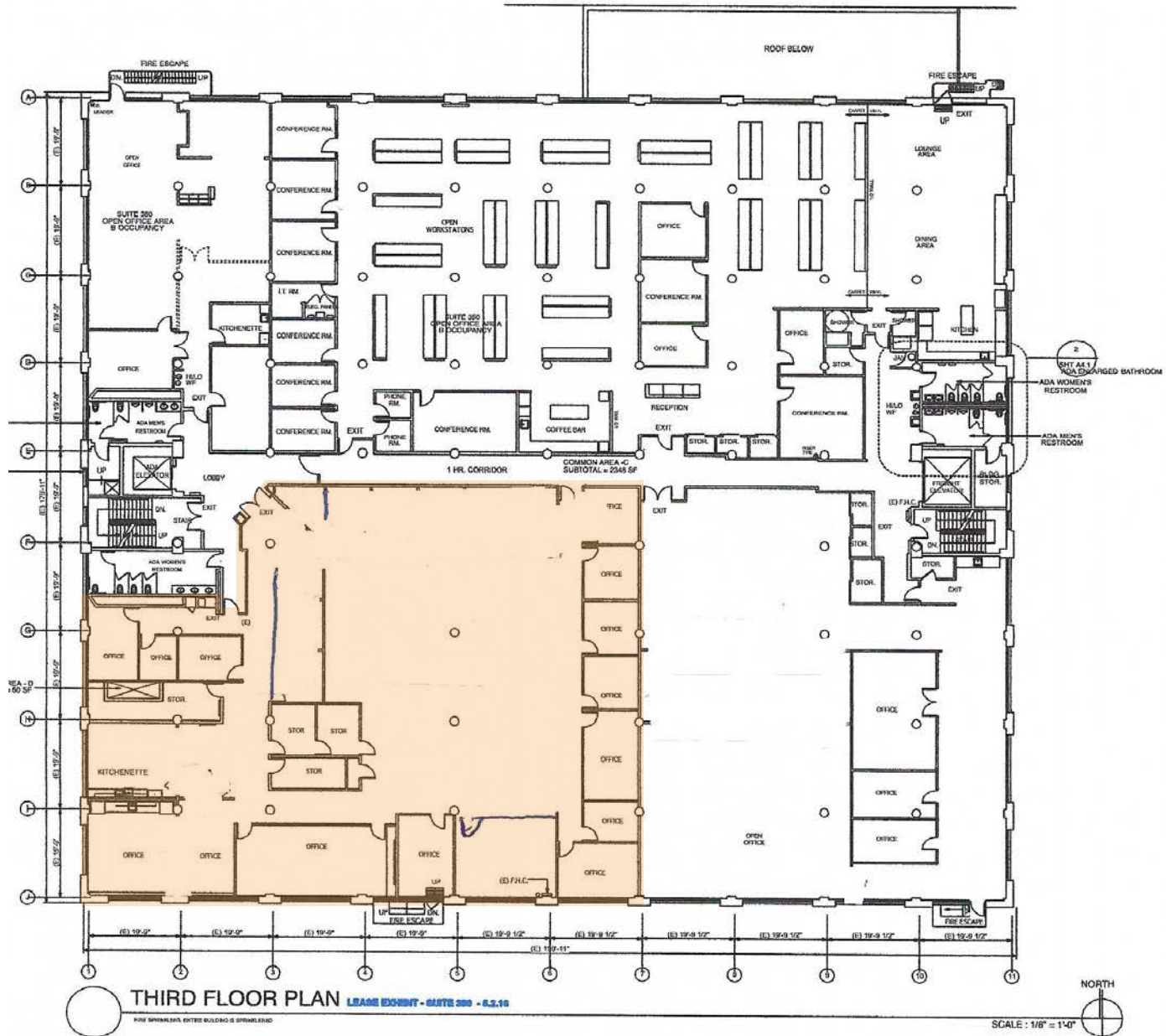
Proximity Highlights:

- .4 Miles BART (16th St Mission)
- 2 Miles Highway 101
- 1.7 Miles Interstate 80
- 2.8 Miles Downtown San Francisco
- 11.8 Miles SFO International Airport

Scott Mason
President
415.215.1937
scott@calcosf.com
LIC# 01036610

Lindsay Cutler
Senior Associate
714.322.9194
lindsay@calcosf.com
LIC# 2198286

Calco Commercial, Inc.
415.970.0000
www.calcosf.com
20 Dorman Avenue
San Francisco, CA



375 Alabama Street
 San Francisco, CA

heminger architects

HEMINGER ARCHITECTS
 100 BATTERY STREET, SUITE 700, SAN FRANCISCO, CA 94111
 T 415 398 0202 F 415 398 0202
 HEMINGERARCHITECTS.COM



| NO. | DATE | DATE |
|---------------------------|--------|---------|
| AS BUILT PLANS | | 5.14.12 |
| LEASE EXHIBIT - SUITE 300 | 6.2.16 | |
| | | |
| | | |
| | | |
| | | |
| | | |
| | | |
| | | |
| | | |
| | | |
| | | |

| SCALE | SHEET | DATE |
|---|------------|------|
| 1/8" = 1'-0" | A2.3 | |
| DESIGNED BY | CHECKED BY | |
| AS BUILT | APPROVED | |
| OCCUPATION | | |
| THIRD FLOOR PLANS | | |
| <small>Copyright © 2013 Charles Heminger Architects - Architects and Planners</small> | | |
| REFERENCE NORTH | SHEET NO. | |
| | A2.3 | |

Calco Commercial, Inc.
 20 Dorman Ave
 San Francisco, CA 94124
 415.970.0000 | www.calcosf.com





Calco Commercial, Inc.
20 Dorman Ave
San Francisco, CA 94124
415.970.0000 | www.calcosf.com



SUBJECT PROPERTY

101

**INTERSTATE
CALIFORNIA
280**

 **CALCO**
COMMERCIAL, INC.

Scott Mason President
415.215.1937 | scott@calcosf.com
LIC# 01036610

Lindsay Cutler Senior Associate
714.322.9194 | lindsay@calcosf.com
LIC# 2198286